

WALKINSTOWN GREENHILLS RESOURCE CENTRE

ANNUAL REPORT 2023



Table of Contents



3. [Chairperson's Statement](#)
5. [Manager's Report](#)
7. [Vision & Mission of WGRC](#)
8. [Service Engagement – Service Users](#)
11. [Service Engagement – Holistic Treatment](#)
12. [Service Engagement – Children & Adolescents](#)
13. [Service Engagement – Substance misuse](#)
14. [Service Engagement – Gambling Harm – GAT stats](#)
15. [Service Engagement – Counselling](#)
16. [Substance Misuse Service / Therapeutic Support](#)
17. [Events](#)
18. [Youth Group / Family Support](#)
19. [Special Funding Awards](#)
20. [WGRC Garden Rooms](#)
21. [WGRC Staff](#)
22. [WGRC Company Details](#)
23. [Governance](#)
27. [Financials](#)
28. [Statement of Financial Position](#)
29. [Acknowledgements](#)

Chairperson's Statement



I am pleased to present the 2023 WGRC annual report. As I reflect on the year, I am reminded of its long tradition of responding to the ever-changing landscape in which it operates. Unfortunately, the services provided by WGRC are needed now as much as ever.

In many respects, the prevalence of substance misuse within the community is becoming increasingly difficult to tackle, as the practice of substance misuse becomes increasingly accepted as a normal part of daily life. Consequently, the challenge of tackling substance misuse and the harms and mental health difficulties associated with it are immense.

Our ability to meet the increasing demands on our services is only possible because of the support we receive from a broad range of organisations, funding bodies, the wider community and service users. WGRC continued to strengthen its core services in 2023 to ensure the provision of more comprehensive and integrated care to align with our strategic priorities. Central to this was collaboration and working in partnership with key stakeholders.

The WGRC Board members, management and staff are committed to a vision of recovery where everyone has the opportunity to overcome addiction and mental health difficulties and live a fulfilled and productive life. In practical terms this means creating pathways to treatment and developing recovery capital for our service users and their families. Our services are targeted at improvements in physical health and well-being, re-engagement with family and developing positive peer relationships.

Chairperson's Statement



The demand for our services has increased year on year and we continue to try to keep pace with the demand while ensuring that we continue to deliver a high- quality service.

The Board members of WGRC played a very important and significant role in guiding and supporting the work of the centre in 2023. I thank each one for their strong engagement and commitment to WGRC. I am grateful to my fellow board members who voluntarily give of their time to provide oversight and ensure that good corporate governance is central to the organisation.

On behalf of the Board, I want to acknowledge and extend sincere thanks to the entire team in WGRC for their professionalism and hard work throughout the year. They are the backbone of the organisation and every year they demonstrate tremendous energy and commitment to their work.

Finally, on behalf of the board I want to give special mention to Bernadette Stokes, our recently deceased former Chairperson. Bernadette was a wonderful advocate for those in recovery from substance misuse and a tremendous supporter of the work of WGRC over many years. Her kindness, wisdom and good humour are fondly remembered, may she rest in peace.

Gerry Lynch
Chairperson

Manager's Report



2023 was both a challenging and productive year for us in WGRC. I am proud to report that in line with our Strategic Plan significant progress was made to grow our services in 2023. We continued to deliver our full range of services to the highest standard. Once again, we saw an increase in numbers attending our services in 2023. Overall, 263 persons

connected with our services in 2023. This increase in service demand was met by a committed team of staff and volunteers who met the challenge of providing high quality support services in a demanding environment.

In 2023, WGRC worked intensively to provide counselling and key-working to 263 participants, of which 168 were new to WGRC services. Keywork was accessed by 181 individual service users and 117 service users accessed counselling sessions, 58 holistic sessions and only 12 group sessions provided in 2023. The latter figure reflecting the nervousness and general reluctance of service users to return to group settings in the aftermath of pandemic restrictions. Service provision in 2023 developed further in the area of Child Therapy (8-12 years) and Adolescent Support (13-17years), with a high volume of referrals coming from local schools. This was much needed in light of the stresses and anxieties experienced by children and young persons in the aftermath of the pandemic.

Manager's Report



We also welcomed two new workers to the team, Caroline and Gayle , Family & Youth Workers, funded through the Community Safety Initiative. This is a very valuable addition to the services provided by WGRC.

I would like to take this opportunity to thank the WGRC team – including staff, board members and volunteers - whose commitment, dedication and hard work made 2023 such a successful year. I would like to thank also all our stakeholders, our funders, donors and strategic partners for their continuing support and engagement with the work of WGRC. Their generosity allows us to continue to provide our recovery services and develop new programmes to meet growing and changing demands. We look forward to strengthening our relationship with you in the years to come.

John Davis



Vision & Mission of WGRC

Vision

Our vision is to work in partnership with participants, their families and their communities to create a more inclusive community in Walkinstown and Greenhills where our participants are treated as emerging active citizens with strengths and contribution to make to their own, and their community's wellbeing.



Mission

The Mission Statement of WGRC is to empower and support the people of Walkinstown and Greenhills to work in solidarity to tackle the causes and symptoms of substance misuse and in so doing develop responses to meet the needs of the local community.



Service Engagement

Service Users



There were 289 service users who accessed WGRC services in 2023.



198 new cases accessed WGRC services in 2023



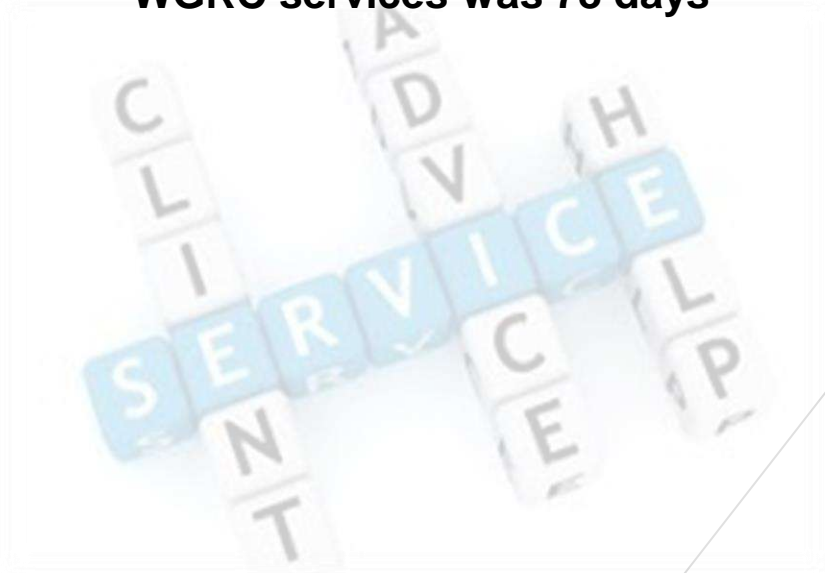
91 of these were continuous care cases carried over from 2022. The age / gender breakdown was 56% female 44% male



12 cases were assessment only



The mean duration of time each service user availed of WGRC services was 78 days



Service Engagement

Service Users



198 new service users accessed WGRC Services
105 Females
93 Males

AGE	FREQUENCY
Less than 15	12
15 – 19	13
20 – 24	16
25 – 29	12
30 – 34	30
35 – 44	41
45 – 49	17
50 – 64	37
65+	20
TOTAL	198

No cases accessed Family Therapy or Strengthening Family programme

21 Cases accessed “Group Education Awareness”

2 cases were referred to external services in 2023

Female aged 8

Male aged 38

Service Engagement

Service Users



14 cases were referred from external services
14 from other drug treatment centres
4 from mental health professionals
34 from GPs

Source of Referral	Total
Self	107
Family	57
Friends	37
Other drug treatment centre	14
GP	34
Social Services/Community Services	18
Probation	2
Outreach Worker	4
School or College	10
Mental Health Professional	4
Not Known	2
TOTAL	289



Service Engagement

Holistic Treatment

37 cases accessed complementary therapy in
2023

Gender	Frequency
Male	5
Female	32
TOTAL	7

AGE	FREQUENCY
15 – 19	1
20 – 24	8
35 – 44	12
50 – 64	13
65+	3
TOTAL	37





Service Engagement

Children & Adolescents

6 Children <12 accessed WGRC Services

5 Females

1 Males

**Mean
duration was
100 days**



7 Adolescents accessed WGRC Services

4 Females

3 Males

**Mean
duration was
87 days**





Service Engagement

Substance Misuse



Gender/Age Breakdown

Breakdown of substances

Reason for Referral	Total
Other opiates	2
Cocaine	25
Benzodiazepines	6
Cannabis	9
Alcohol	44
Other	7
TOTAL	93

AGE	FREQUENCY
< 15	4
15 - 19	5
20 - 24	10
25 - 29	10
30 - 34	18
35 - 44	20
45 - 49	5
50 - 64	15
65+	6
TOTAL	93

Gender	Frequency
Male	42
Female	51
Total	93

Service Engagement

Gambling Harm - GAT stats

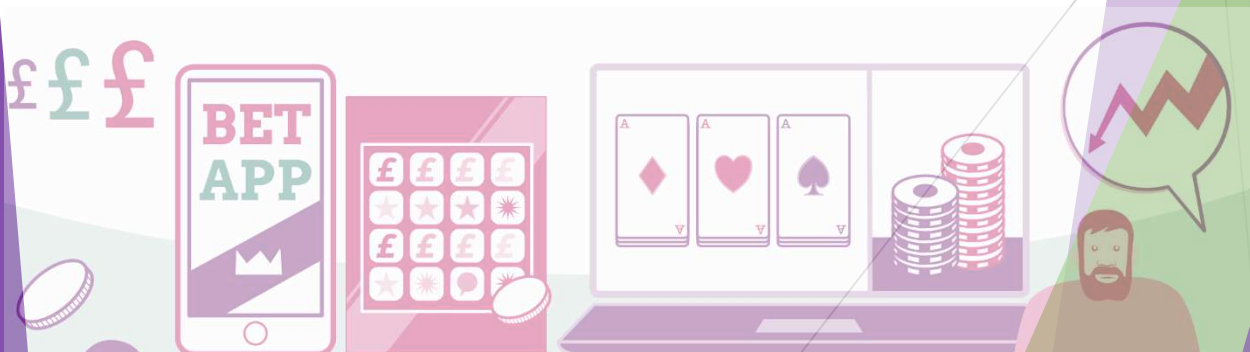


SERVICE USER BREAKDOWN	
Problem Gambler	78
Affected Other	19
TOTAL USERS	97

AGE / GENDER BREAKDOWN		
	Male	Female
<18	0	0
18 – 24	2	1
25 – 44	11	5
45 - 64	3	4
65+	0	0

GAMBLING ACTIVITY	
Bookmaker Shop	5
Online Casino	5
Casino	2
Online Sports Betting	22
Scratch	1
Online Bingo	14

REFERRAL SOURCE	
Self-Referral	29
Referred from another service	5





Service Engagement Counselling

125 accessed individual counselling
68 Female
57 Male

The mean time in individual counselling was 72 days.

Key Working

177 individuals accessed key working
98 Female
79 Male

The mean time was 16 days.
Median was 1 day (112 out of 177 had 1 key working session)

Mental Health Support

In terms of how many service users accessed services for mental health support; 82 cases have mental health recorded as a secondary problem. No cases received psychiatric treatment as an intervention.



Substance Misuse Service

The Drug Misuse Service in WGRC provides an opportunity to engage in a process that helps the participant to identify what blocks them emotionally from making progress with their substance use or mental health issue. WGRC Drug Misuse Service offers a combination of different therapeutic and holistic interventions to support participants to reduce or stop their drug / alcohol misuse.

Participants who access the service are likely to use a combination of different drugs such as cocaine and its derivatives, tablets (valium, zimovane), stimulants, alcohol, opiates such as heroin and methadone, and cannabis in all forms.

A lot of the time it is word of mouth that brings new participants into the service, usually a friend or relative will have accessed the service and have had a positive experience in dealing with their addiction and recommend to others that they attend. Other source of referrals are from local GP's, psychiatric & mental health services, local addiction services and local schools.

Therapeutic Support

We utilise a combination of different intervention models such as Cognitive Behavioural Therapy (CBT), Community Reinforcement Approach (CRA) and Motivational Interviewing (MI) within the service.

The aim of using these varied interventions is to help the person to begin to change the drug or alcohol usage or to stop completely if that is what they want to achieve. It is also to explore the thought patterns that led to drug misuse and addictive behaviours in the past, and what effective strategies they can put in place, so as to ensure the risk of relapse diminishes in the future.

The sessions are structured, goal oriented and focused on immediate problem solving.

Events



International Women's Day

WGRC hosted a Walk of Celebration with Addiction Response Crumlin & D12LDATF around Walkinstown Cross, releasing Purple Balloons in the D.12 Community



Women's Group

The women's group went on a day walking Alpacas in the Wicklow Mountains



Halloween Fundraising

The always wonderful Walkeleles helped in our annual Halloween fundraiser in the Ashleaf in which €1470 was raised





Youth Group

Family support / Youth work

The WGRC family support workers Caroline and Gayle do weekly outreach in the community with young people aged 12 – 24 years, providing support and engagement. They support challenges around areas such as addiction, family dynamics, school attendance & offer 1 to 1 chats too. They run a youth group and host a number of events for the members.

They also provide family support in areas such as housing, the food bank, well being groups, support service, referrals or just an off loading chat and have received a large number of referrals



Special Funding Awards



WGRC was chosen as one of the lucky recipients of a grant from the Toy Show Appeal! €11,000 was awarded for Child Therapy and Adolescent Support and Family Support.



WGRC were given approval by the Government with support from the Dormant Accounts Fund for the development of our Garden Area and Garden Rooms



WGRC Garden Rooms

The Garden rooms were opened in November and enable WGRC to provide a wider range of supports to Children and Adolescents with mental health difficulties.



WGRC Staff

The 2023 Team



Manager John Davis	Team Leader Monica Grogan	Key Worker Ann Nugent
Project Worker Dermot Phillips	Project Worker Don McLoughlin	Project Worker Don Hegarty
Project Worker Mary Barnes	Financial Administrator Jennifer McGreal	Receptionist Fiona McGuinness
Receptionist Colm Gannon	Receptionist Rose Treanor	Receptionist Alan Fagan
Receptionist DJ Garcia	Complimentary Therapy Sonya Keogh	Youth Worker Caroline O'Neill
Youth Worker Gayle Cullen	Seasonal Volunteer Counsellors Bridget Kenny	Seasonal Volunteer Counsellors Gerard O'Dea
Seasonal Volunteer Counsellors Davina Brady	Sessional Counsellors Martina Curtis	Sessional Counsellors Arlette Kehr
Sessional Counsellors Gemma Cox	Caretaker Martin Daly	Caretaker Finbarr McGlynn

WGRC Company Details



Bernadette Stokes

Chairperson

**Suzanne
McEaney**

Treasurer

Val Scott

Vice
Chairperson

**Susan
McAuley**

Secretary

**Vivian
Mahady**

**Cornelia
Horvath**

**Jason
Flood**

**Paddy
McGrane**

**Michael
O'Reilly**

**Liz
Bramble**
Directors

**Gerry
Lynch**

Auditors

Hugh McCarthy &
Associates
161-163 Lower
Kimmage Road
Kimmage, Dublin 6W

Solicitor

Bourke & Company
167/171 Drimnagh
Road,
Dublin 12

Bank

Bank of Ireland
Walkinstown,
Dublin 12

Revenue

Company Registration Number 334239

Governance



In WGRC, accountability and transparency are vitally important in everything that we do. We publish our financial accounts annually and place them on our website for easy access. They are prepared in accordance with best practice Statement of Recommended Practice (SORP) in the absence of statutory reporting standards for charities in Ireland. We are readily available to the public and respond to all queries with honesty and integrity. Our annual reports are available on our website, along with our annual returns www.wgrc.ie. We have always lodged our reports with the Companies Registration Office (CRO).

We comply fully with the Charity Regulators Governance Code, a code of practice for good governance of community, voluntary and charitable organisations in Ireland. The Charity Regulators Governance Code is a legal requirement which is being implemented in full by the Board and Management of Walkinstown Greenhills Resource Centre. We review as required to ensure continued compliance. (Visit www.charitygovernancecode.ie). We welcome the progress to date of the Charity Regulatory Authority on the phased implementation of the Charities Act 2009 and WGRC will continue to ensure full compliance with all requirements.

Governance



ACCOUNTING RECORDS

The Board Members believe that they have complied with the requirements of Section 281 to 285 of the Companies Act, 2014 with regard to accounting records by employing personnel with appropriate expertise and by providing adequate resources to the financial function. The accounting records of the company are maintained at WGRC, 6 Cromwellsfort Road, Walkinstown, Dublin 12.

These documents are prepared in accordance with the Companies Act, 2014 and, voluntarily in the absence of statutory reporting standards for charities in Ireland, in accordance with international best practice [Charities SORP (FRS 102)] as recommended by the Charity Regulator. This Directors' report contains the information required to be provided in the Trustee's Annual Report under the SORP guidelines.

GOING CONCERN

Based on the results for the year, the year- end financial position and the approved 2023 budget, the Board of Directors believes that the charity has adequate resources to continue in operational existence for the foreseeable future. For this reason, the Board continues to adopt the 'going concern' basis in preparing the financial statements.

Governance



POLITICAL CONTRIBUTIONS

There were no political contributions in this year or any previous years and as a result no disclosures are required under the Electoral Act, 1997.

POST BALANCE SHEET EVENTS

There have been no events subsequent to the year- end that require any adjustment to or additional disclosure in the 2023 financial statements.

DISCLOSURE OF INFORMATION TO AUDITOR

The directors who held office at the date of approval of this directors' report confirm that, so far as they are each aware, there is no relevant audit information of which the Company's auditor is unaware; and each director has taken all the steps that he/she ought to have taken as a director to make himself/ herself aware of any relevant audit information and to establish that the Company's auditor is aware of that information.

Governance



AUDITOR

Hugh McCarthy & Associates (HMCA), Chartered Accountants have expressed their willingness to remain in office and, in accordance with Section 383(2) of The Companies Act, 2014, Hugh McCarthy & Associates will continue in this role. The Audit is prepared in March / April and presented to the WGRC Board of Directors at the Annual General Meeting during the month of May on an annual basis. The Board of Directors review audit arrangements annually. The appointment of Company Auditors is part of the review process. When completed and signed off by the Board of Directors the audit is uploaded to the WGRC website www.wgrc.ie and made available to all interested parties.

RISK MANAGEMENT

WGRC works with young people, adults and families experiencing the effects of disadvantage. The nature of this work means that we take on a medium to high level of risk in our core activity. We aim to minimise this through our ongoing risk assessment process and controls, including the need to ensure our work is appropriately resourced, across our identified areas of risk.

Financials 2023



	2023	2022
Income	€551,377	€532,541
Expenditure	(€424,366)	(€300,178)
Surplus before interest	€127,011	€232,363
Finance costs	(€22,158)	(€17,442)
Surplus for the Financial Year	€104,853	€214,921
Total Comprehensive income	€104,853	€214,921

Statement of financial position 2023



	2023	2022
Non-Current Assets		
Property, plant & equipment	€505,492	€496,024
Current Assets		
Receivables	€4,418	€12,359
Cash & Cash equivalents	€254,942	€192,366
Payables: amounts falling due within one year	(€134,048)	(€39,243)
Net Current (Liabilities)/Assets	€125,312	€165,482
Total Assets less Current Liabilities	€630,804	€661,506
Payables: amounts falling due after more than one year	(€229,354)	(€247,863)
Net Assets	€401,450	€413,644
Reserves		
Retained surplus	€401,450	€413,644
Equity attributable to owners of the company	€401,450	€413,644

Acknowledgements



**GAMBLING
AWARENESS
TRUST**.ie



An Roinn Coimirce Sóisialaí
Department of Social Protection



Feidhmeannacht na Seirbhíse Sláinte
Health Service Executive



An Roinn Dlí agus Cirt
Department of Justice

CDET B

An Bord Oideachais agus Oiliúna Chathair Bhaile Átha Cliath
City of Dublin Education and Training Board

